

BOAT SHOWS / BOOT DUSSELDORF / NEWS / PREMIERES

# Cantiere del Pardo unveils three new models at Boot Düsseldorf 2024: innovation and elegance

BY SILVIA PRETTO

Start Reading ▾

BY SILVIA PRETTO · JANUARY 26, 2024 · 7 MINS READ

Cantiere del Pardo has once again managed to **impress** boating enthusiasts at **Boot Düsseldorf 2024**, unveiling **three new models** that promise to redefine the sailing and motor boating experience. Thanks to a combination of in-house expertise, an ongoing commitment to innovation, the support of top designers and valuable customer feedback, the shipyard has further expanded its fleet with the new **Pardo GT65**, the **Grand Soleil 60 Long Cruise** and the revolutionary **Grand Soleil Blue**. Let us now take a brief look at the three new CDP yachts, which will be make their on-the-water debuts at upcoming editions of the **Cannes Yachting Festival**.



## Pardo Yachts GT65: speed, style and fun

The first protagonist of this premiere is the **Pardo GT65**, a **bold** and **versatile** addition to the Pardo Yachts family. Strategically positioned between the GT52 and the upcoming flagship GT75, the new Pardo GT65 is a **concentrate of**

### LANGUAGE SWITCHER

[English](#)
[Español](#)
[Deutsch](#)
[Português](#)

### BROWSE CATEGORIES

Select Category ▾

READ  
ALL OUR MAGAZINES  
FOR FREE



TRELLI | TECNORIB



PARDO  
YACHTS

**speed**, flexibility and fun, designed to offer an unprecedented on-board experience.

The **design** of the GT65 focuses on **harmony** between interior and exterior spaces with flexible performance and layout thanks to large windows and retractable doors. The aim is to offer exciting and comfortable cruising while maintaining an essential connection with the sea.

A major innovation on the GT65 is the **retractable garage** that can accommodate a 3-metre tender, a sundeck and a lounge area aft. **Nauta Design**'s design is reflected in the low volumes aft, preserving the spacious cockpit environment. The foredeck offers an open-air lounge, while the interior offers several layout options, including a galley on the main or lower deck, making this model unique in its category.



The innovations extend to the interior, with **several layout options** offering custom-made solutions for owners. The spacious owner's cabin, located forward, places the emphasis on comfort, while the foredeck offers another open-air lounge, complemented by a large sundeck and convertible sofa.

The GT65 retains Zuccheri Yacht Design's distinctive **reverse bow** and naval architecture, and will be equipped with **Volvo Penta IPS 1350** engines for performance and safety; the debut is eagerly anticipated at **Cannes Yachting Festival 2025**.

LOA	19.75 M / 64.80'
LH	18.04 M / 59.19'
MAX BEAM	5.80 M – 19 FEET
FUEL TANK CAPACITY	3200 L / 845USG
WATER TANK CAPACITY	1100 L / 291USG
FULL LOAD DISPLACEMENT	38000 KG / 83775 LBS
CONCEPT AND CONSTRUCTION	CANTIERE DEL PARDO
NAVAL ARCHITECTURE	ZUCCHERI YACHT DESIGN
EXTERIOR, INTERIOR DESIGN & GA	NAUTA DESIGN

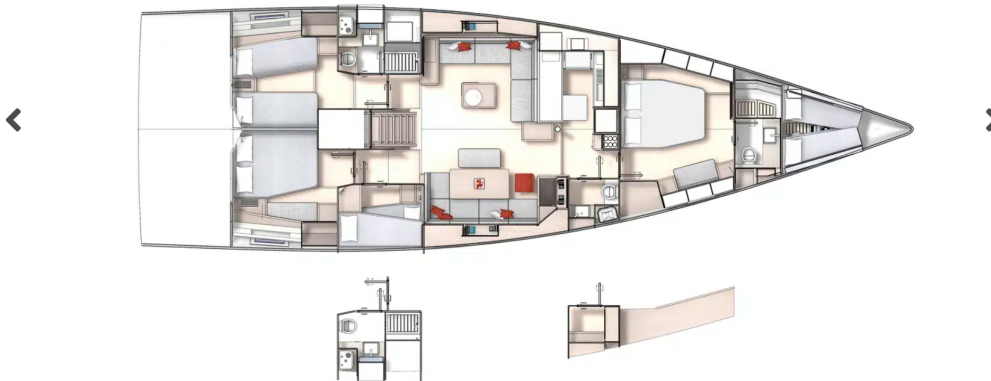
**Grand Soleil Yachts: efficient and sustainable sailboats**





## Grand Soleil 60 Long Cruise: Efficiency, Style and Innovation

The second model presented is the **Grand Soleil 60 Long Cruise (GS 60 LC)**, an excellent addition to the long-range cruising line. Designed by **Nauta Design** and **Matteo Polli**, it stands out for its spacious stowage spaces and tanks designed for maximum range. The 'step-free' deck layout facilitates movement on board, while the cockpit design has been revised to improve ergonomics and comfort.



Design features include a **pronounced V-shaped bow**, a reduced wetted surface and outstanding dynamic stability. The GS 60 LC is also equipped with a **full batten furling mainsail** and hydraulic controls to improve efficiency when sailing, and there is a choice of a model with rollbar or without.

Below deck, the GS 60 LC houses a **master cabin** with a French bed, **two guest cabins** and an additional crew cabin. Scheduled to debut at the **Cannes Yachting Festival in 2025**, the GS 60 LC embodies Grand Soleil Yachts' commitment to enhancing the sailing experience with elegance and innovation.

LOA	19.68 m – 64.5 feet
LH	18.30 m – 60 feet
MAX BEAM	5.80 m – 19 feet

DRAFT	2.80 m – 9.2 feet
DISPLACEMENT	27 TON – 59524 lbs
FUEL TANK CAPACITY	1000 L approx. – 264 gallon
WATER TANK CAPACITY	900 L approx. – 237,7 gallon
BLACK WATER TANK CAPACITY	200 L approx. – 52,8 gallon
SAIL PLAN	205 m2 – 205 square meters
CONCEPT AND CONSTRUCTION	CANTIERE DEL PARDO
NAVAL ARCHITECTURE	MATTEO POLLI
EXTERIOR, INTERIOR DESIGN AND GA	NAUTA DESIGN

### Grand Soleil Blue: sustainability first



The third model presented, the **Grand Soleil Blue**, is a **10-metre** sailing yacht that opens a new chapter in the history of **sustainable sailing**. Resulting from the collaboration between Matteo Polli, Nauta Design and NL Comp, the Grand Soleil Blue is designed with a special focus on **sustainability**, **efficiency** and innovative **design**.

From **thermoplastic resin** construction to **electric propulsion** and the use of recyclable materials, this dream boat is an example of commitment to a 'bluer' future at sea. The project, co-financed by the Emilia-Romagna region, promises to bring **sustainability** to the centre of the sailing world.





The GS Blue will be fitted with **electric propulsion**, solar panels, thermoplastic sails, and a hydro-generation system for a reduced carbon footprint. The GS Blue is **fully recyclable** at the end of its life cycle, successfully tackling the challenge of composite boat disposal.

Scheduled to debut at **Cannes Yachting Festival 2025**, this innovative model offers a sustainable sailing experience without compromising on style and quality.

With these new additions to their fleet, Cantiere del Pardo confirms its **leading position in yachting innovation**, offering solutions that combine excellent performance, comfort and respect for the environment. The appointment at the **Cannes Yachting Festival 2025** will be an unmissable occasion for fans of luxury yachts and technological innovation.

LOA	11 m – 36 feet
LH	9.99 m – 32.8 feet
MAX BEAM	3.70 m – 12 feet
STANDARD DRAFT	2.20 m – 7.2 feet
OPTIONAL DRAFT	1.80 m – 5.9 feet
DISPLACEMENT	3300 KG – 7275 lbs
MAINSAIL	36 m2 – 36 square meters
SELF-TACKING JIB	26 m2 – 26 square meters
GENNAKER	100 m2 – 100 square meters
SAIL PLAN	205 m2 – 205 square meters
CONCEPT AND CONSTRUCTION	CANTIERE DEL PARDO
NAVAL ARCHITECTURE	MATTEO POLLI
EXTERIOR, INTERIOR DESIGN AND GA	NAUTA DESIGN



### LEAVE A REPLY

Write your comment...

